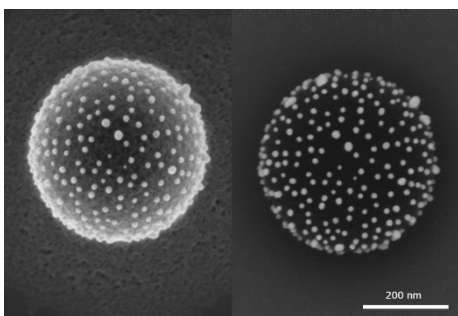


Correlative Microscopy Workshop:

Addressing Length and Scale Challenges for Materials and Life Science

Wednesday December 14, 2016 – 4:30pm-7:00pm

University of Colorado Boulder - Discovery Learning Center Collaboratory (Room 1B50/60/70)



Precursor material for functional surface, gold nanoparticles on polystyrene sphere, imaged with GeminiSEM 500, at 3 kV. Left: Inlens SE image, surface topography. Right: EsB image, material contrast

4:30 pm - Doors Open – *Hors d'oeuvres provided to those that RSVP*

5:00 pm - *Correlative Light and Electron Microscopy - On the way from 2D towards 3D*

Dr Alexandra Elli, Correlative Solutions Manager, Carl Zeiss Microscopy, LLC

5:45 pm - *Gemini Column Innovations and Variable Pressure Detection Technology*
Dr Pascal Anger, Product Marketing Manager, Carl Zeiss Microscopy, LLC

6:30 pm - *Extremely large solid angle Xray detector improves low kV Analysis*
Brian Miller, Senior Sales Engineer, Bruker AXS Inc.



Register for workshop:
<http://tinyurl.com/Zeiss-Dec14>

Sponsored By:
Nanomaterials Characterization Facility,
Carl Zeiss Microscopy, LLC & Bruker AXS Inc.



December 12-16 – Schedule a GeminiSEM 500 Demo

Come see the GeminiSEM 500 FESEM with Bruker 60mm EDS to see the Correlative workflow first hand. To schedule time to image your sample:

Kaili Porter, ZEISS Account Manager

kaili.porter@zeiss.com

970-290-6629